

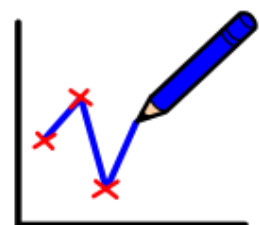


Plymstock School

Achieving Excellence through Curriculum and Culture

Year 10

Understanding Progress Checks



Helping you make sense of your child's report.



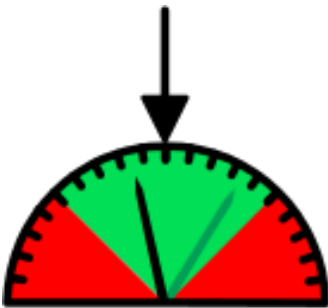
At Plymstock School, we believe that regular, clear communication about your child's learning journey is vital. This guide explains the key parts of the summer Progress Check report and what they mean.

Summer assessments – what you'll see:



- Your child's report includes key information from recent assessments:
 - **% Score.** How they did in the Summer assessments sat in examination conditions.
 - **Rank.** Their position compared to others in the year group.
 - **Average Mark.** The average score achieved in each subject.
- These figures help you see where your child is doing well and where they may benefit from extra focus.

What is the Expected Outcome Band (EOB)?



- The Expected Outcome Band is a range of GCSE grades students with similar starting points typically achieve by Year 11.
- Think of it as a target zone, designed to reflect where similar students nationally tend to land with regular attendance, consistently steady effort and good habits.
- Based on national data. It's not a ceiling; it's a guide, and students can exceed it.

What is the Current Working Grade (CWG)?



- The Current Working Grade reflects where your child is right now. It takes into account:
 - Recent assessments
 - Classwork
 - Homework
 - Teacher judgment
- It's **not a prediction** of what they'll get at GCSE. Instead, it highlights how they're currently performing and what they need to work on.

Understanding reading; Standardised Age Scores (SAS)



- We use a Standardised Age Score (SAS) to understand reading ability.
- Compares your child's reading age to others nationally.
 - **100** is average.
 - Above 100 = Reading above age expectations.
 - Below 88 = May need some extra reading support.
- Reading is the foundation of learning across all subjects.

Commitment to Learning (CTL)



- Shows how your child is approaching their learning; not about ability or grades.
- CTL Categories:
 - **Outstanding.** Goes above and beyond, a role model.
 - **Good.** Consistently works hard.
 - **Inconsistent.** Mixed effort and/or conduct.
 - **Concern.** Low effort and conduct that needs improvement.

Final thoughts



- Progress takes time; what matters most is effort, attendance, and mindset.
- Reports are a conversation starter, not the final verdict.
- We encourage you to talk with your child about their report: What are they proud of? What are their goals?
- We're here to support your child every step of the way.